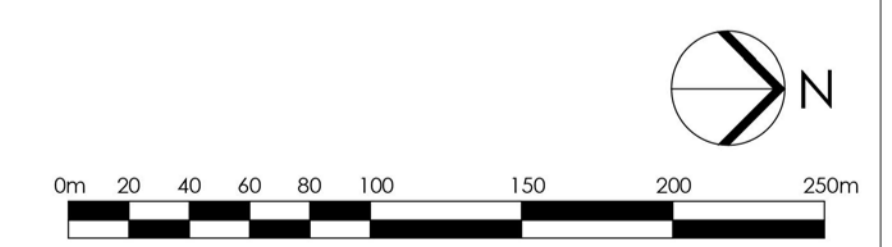


## APPENDIX C: Illustrative Masterplans



Illustrative masterplan option A  
1:2500



Do not scale this drawing  
Do not derive dimensions from digital media

Rev	Date	Drawn By	Checked By	Rev	Date	Revision Notes	Drawn By	Checked By	Rev	Date	Revision Notes	Drawn By	Checked By	Drawing Status	Subsidiary	Drawing No.	Rev.
P1	30.09.2021		RM	CE										PLANNING	S4	3770-FBA-XX-00-DR-A-01_110	P3
P2	19.10.2021		RM	CE										Screen Hub UK, Pinewood Studios	Job No: 3770		
P3	26.10.2021		RM	CE										Illustrative Proposed Masterplan (A)			

© Drawing & Design Copyright of:

**FAULKNERBROWNS ARCHITECTS**

FaulknerBrowns LLP  
Oldson House  
Northumbrian Way  
Killingworth  
Newcastle upon Tyne  
NE12 6JW  
T+44(0)191 2683007  
F+44(0)191 2478132



Illustrative masterplan option B  
1:2500

Illustrative building area schedule B		
Unit Type	GEA m2	GEA ft2
Production	32,274	347,390
Attraction / Experience	32,316	350,000
Growth Hub / Education	2,320 / 2320	25,000 / 25,000
<b>Total</b>	<b>69,230</b>	<b>747,390</b>

Illustrative site area schedule B		
Name	Area (acres)	Area (ha)
Backlot 1 (new)	3.57	1.44

Illustrative car parking B	
Key Name	Number of spaces
Attraction/Experience	1,400
Production	606
Growth hub/ Education	226
<b>Total</b>	<b>2,232</b>

**Key:**

- Application boundary
- Attraction / Experience
- Growth Hub / Education
- Backlot
- Sound stage
- Office
- Workshop



© Crown copyright and database rights 2020 Ordnance Survey 0100031673

Rev	Date	Drawn By	Checked By	Rev	Date	Revision Notes	Drawn By	Checked By	Rev	Date	Revision Notes	Drawn By	Checked By	Rev	Date	Revision Notes

Drawing Status: <b>SKETCH</b>	Suitability:	Drawing No: <b>3770-FBA-XX-00-DR-A-01_111</b>
Job Title: <b>Screen Hub UK, Pinewood Studios</b>	Job No: <b>3770</b>	© Drawing & Design Copyright of:
Drawing Title: <b>Illustrative Proposed Masterplan (B)</b>		
Date: <b>30.09.2020</b>	Scale: <b>1 : 2500</b>	Drawn By: <b>CL</b> Checked By: <b>CE</b>

**FAULKNERBROWNS ARCHITECTS**

FaulknerBrowns LLP  
Deacon House  
Northumbrian Way  
Killingworth  
Newcastle upon Tyne  
NE12 0JW  
T+44(0)191 2683007  
F+44(0)191 2478132